






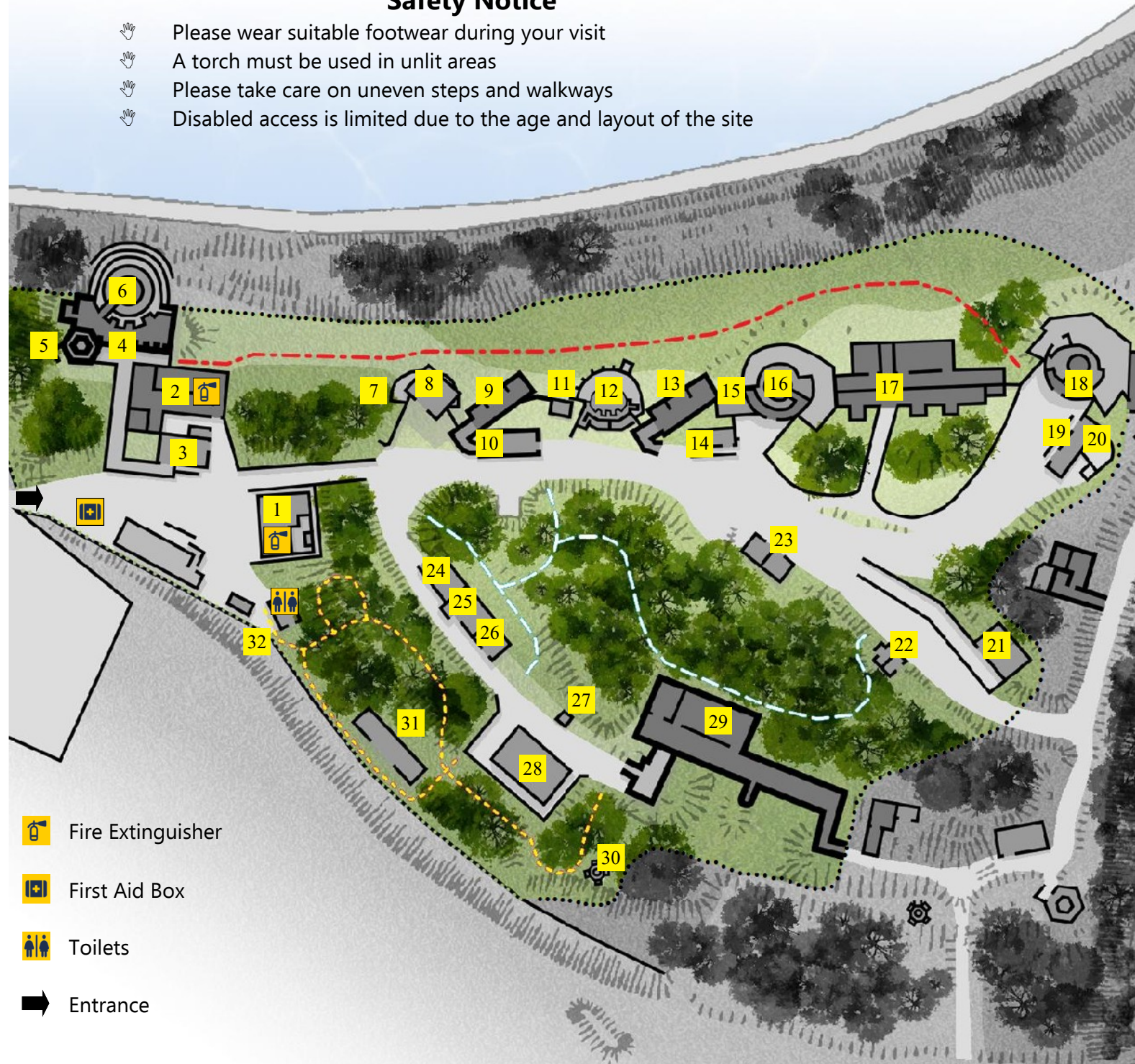


- | | | |
|----|---------------------------|------|
| 1 | The Guardhouse | 1890 |
| 2 | A2 Magazine | 1901 |
| 3 | Crew Shelter | 1901 |
| 4 | 6 inch Gun Emplacement | 1901 |
| 5 | Type 22 Pillbox | 1940 |
| 6 | 6 inch Gun Emplacement | 1940 |
| 7 | 4.7 inch Gun Emplacement | 1890 |
| 8 | Battery Observation Post | 1940 |
| 9 | 4.7 inch Magazine | 1890 |
| 10 | Crew Shelter | 1906 |
| 11 | Control Post | 1936 |
| 12 | 4.7 inch Gun Emplacement | 1890 |
| 13 | 4.7 inch Magazine | 1890 |
| 14 | Crew Shelter | 1916 |
| 15 | 3 pounder Gun Emplacement | 1898 |
| 16 | 6 inch Gun Emplacement | 1940 |
| 17 | Main Magazine | 1890 |
| 18 | 6 inch Gun Emplacement | 1940 |
| 19 | Crew Shelter | 1916 |
| 20 | 3 pounder Gun Emplacement | 1898 |
| 21 | Artillery Store | 1890 |
| 22 | Latrines | WWI |
| 23 | Gun Store | WWII |
| 24 | Artillery Store | 1893 |
| 25 | Fire Station | WWII |
| 26 | Workshop | 1890 |
| 27 | Petrol Store | 1916 |
| 28 | Generator Room | WWII |
| 29 | Generator Room & Shelter | 1890 |
| 30 | Spigot Mortar | WWII |
| 31 | Oil Store | 1936 |
| 32 | Toilets | |

- Fox Trail 
- Bird Trail 
- Squirrel Trail 
- Site Boundary 

Safety Notice

-  Please wear suitable footwear during your visit
-  A torch must be used in unlit areas
-  Please take care on uneven steps and walkways
-  Disabled access is limited due to the age and layout of the site



-  Fire Extinguisher
-  First Aid Box
-  Toilets
-  Entrance

A Brief History

Since 1543, a fort has stood near Beacon Hill to protect Harwich from enemy attack. The remains of the original blockhouse are now at the far end of the stone breakwater as a result of erosion.

During the invasion scare in the 1790's a new, three gun battery was built, but this was also replaced by 1810 due to further erosion.

By the 1840's, with a further risk of invasion by the French, a five gun battery was installed just in front of the present day Cornwallis Battery. This battery fell into disrepair with the advent of newer guns being installed at Harwich Redoubt. These Rifle Muzzle Loaders (RML's) were being used to fend off an attack by the new Iron Clad Battleships of the day.

By 1890, The RML's were being replaced by more powerful guns known as Breech Loaders. These had almost twice the range of the earlier guns. Harwich Redoubt was not able to be updated, so a new battery was built nearby at Beacon Hill. The original guns were two Elswick Disappearing Guns, one 10 inch and one 6 inch calibre with a maximum range of 4.5 miles. These were joined by two 4.7 inch Quick Firing Guns with a similar range and two 3 pounder Quick Firing Guns for local defence and practice.

By 1904, the two Disappearing guns had been replaced by two 6 inch Breech Loaders en barbette. These were able to fire over a low parapet wall and were protected by iron shields in front of the gun crew.

The fort was reused in WWI and WWII with alterations being made up until 1941 with the building of Cornwallis Battery, the last battery installed at Beacon Hill.

Opening Times

Weekends and Bank Holidays Only

Summer: Easter - 30th September

10am - 4pm (last admission 3:30pm)

Winter: 1st October - Easter

11am - 3pm (last admission 2:30pm)

Weekday visits can be arranged by appointment only (subject to availability)

New Volunteers Welcome

If you have some spare time and would like to become a volunteer please speak to us during your visit.

Site Hire Available


If you are a member of a camera club, car club or paranormal group, Beacon Hill Fort can be hired at flexible rates. Filming and music videos have also been shot here so please speak to us to discuss your needs.


Group Guided Tours

Group tours are available on request (subject to availability).

Contact Us

 07841 561 882 - Barry

 contact@beaconhillfort.co.uk

 beaconhillfort.co.uk

 @Friendsofbeaconhillfort



Free Admission

Donations Welcome

Beacon Hill Fort was built in 1890 to be the latest addition to the Harwich defences. Since Tudor times Harwich has been an important anchorage and many forts and batteries have been built to protect it. Beacon Hill was closed in 1956 but is now open to the public for the first time

